

ELEVATE

INDIANAPOLIS

PO BOX 441456
INDIANAPOLIS, IN 46244

MISSION

Building long-term,
life-changing
relationships with
Indianapolis urban
youth, equipping
them to thrive
and contribute to
their **community**.



ELEVATEINDY.ORG

2021

annual report

MAKING A



IMPACT

2021 | *annual report*



Dear Elevate Supporters and Partners,

It's with great anticipation that we all begin a New Year and look to renewed hope for what blessings might come with it in our families, city, state, and country. It's with great appreciation for your generous support and partnership, along with the work of our board and incredible staff, that we share our Annual Report about the impact made throughout 2021.

It's energizing to reflect on the resolve and creative efforts shown by countless schools, agencies, and non-profits in our community

towards young people and their families. We are grateful to be counted among student-first, impact-driven organizations in our city, thanks to your continued partnership.

As you review our Elevate Annual Report and have questions, please don't hesitate to reach out to connect with me or one of the Elevate staff to learn more.

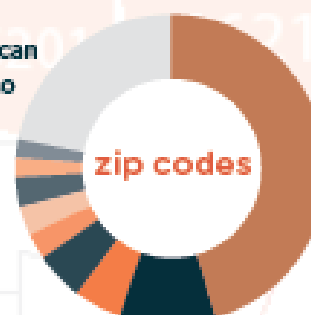
Serving with you,

Aaron Story, Elevate Indianapolis, President & CEO

ELEVATE INDY STUDENTS



- 50% African American
- 30% Hispanic Latino
- 10% Caucasian
- 4% More than one race
- 1% Asian
- 5% Other



- 46222 46%
- 46218 10%
- 46201 5%
- 46224 5%
- 46221 3%
- 46208 3%
- 46254 3%
- 46202 2%
- 46203 2%
- other 15 zip codes 22%

80%

economically disadvantaged youth

63%

don't live with biological father

28%

non-English speaking households

George Washington H.S.

Matchbook Learning (K-8)

WESTSIDE



EASTSIDE

Arsenal Tech High School

Harshman Middle School

Theodore Potter Elementary

700+ Students & Alumni Served

ELEVATE

long-term

ELEVATE'S THRIVING YOUTH SCORECARD

PROGRAM OUTCOMES



64%
communicate
monthly with
Teacher-Mentor



45%
serve people
regularly because
of Teacher-Mentor



71%
do not get in
trouble at school



61%
Report deep
relationship with
Teacher-Mentor



32%
say Elevate is why
they pass classes



41%
do afterschool
activities



78%
help struggling
peers



73%
are not afraid to
try new things

Each fall and spring, our high school students take a pre and post assessment called the "Thriving Youth Survey," a third-party administered evaluation that gauges our relative impact from year to year and compares it to the 14 other Elevate affiliates across the US. The results from 2020-2021 are attached. Last year, many of our students struggled during COVID-19 restrictions; some were hesitant to interact in person, and school was largely online, resulting in many social challenges. Those struggles are reflected in the data, indicating less engagement from students in many areas than is typical. However, we were pleased to have kept pace in all four measured areas of impact (Education, Community, Social-Emotional, & Character) with other Elevate affiliates!

24-7 IMPACT OUTCOMES

GRADUATION RATE

100%
Class of 2021

SCHOOL

Avg. grades in school
last semester

B-

2021 SENIORS

11 of top 30
@ ATHS
1st Four
GWHS grads

QR CODE



IMPACT & METRICS



Scan our
Impact & Metrics Site
QR Code

WE ARE THRILLED TO HAVE LAUNCHED OUR NEW IMPACT & METRICS SITE.

We are thrilled to have launched our new Impact & Metrics site. We encourage you to check it out by scanning the QR Code above. On the site, you will see "A Day in the Life" of Teacher-Mentors Ms. Kara Simmons and Mr. Josh Mendoza. This site will be updated with metrics and statistics on a quarterly basis. Please share this site with your friends, family, and other networks. We are really proud of the hard work our program staff does, and we want the community to see the evidence of their investment in urban youth.

MAKE A LONG-TERM INVESTMENT



700+

Projected 700+
students served in
2021-2022
program year

Current annual budget of

\$ 843,000



+95%

2016 -2021
Graduation Rate

\$1,200



To serve an Elevate
student for one year

700+

lives changed

ONCE IN ELEVATE, ALWAYS IN ELEVATE



"Elevate is really there for you, in school and out of school. They are not only going to be in your life, they are going to care about you...to help keep you on the right path in life. Elevate is the way to go--it's a great break between the stress of normal school, but it's also a great guide to help you figure out where you want to go in life. We talk about major topics here...a lot of people don't get that from their parents at home, and Elevate gives them a chance to find that."

**Malachi, George Washington High School
Senior Class of '22**



"I've been in Elevate for almost four years. Elevate is always there for you and is always willing to help. They are just a great group to be around and will always help you and always get you motivated. It's a big family, so you get a lot of love and support and everything you would want in a family. Without Elevate, I would have to say that I would be struggling a lot, mentally, physically, and emotionally. [Elevate] has helped me a lot to be myself and to be the teacher that I want to be. [They] show me what I can do and show me to never set boundaries that limit me."

**Mariana, Arsenal Technical High School
Senior Class of '22**



"Elevate has helped me academically by exposing me to internships, scholarships, and colleges. They helped me set goals for my future, and now I'm sitting where I've always wanted to be. I would say I am a thriving contributor in the way that I spread awareness to serious topics like race, mental health, and others. I find ways to educate my peers and come together to fight against these serious things."

**Stephanie, Class of '21
Alumni & Freshman at Taylor University**

Learn more about partnering
with Elevate Indianapolis at

ELEVATEINDY.ORG    

INDY

relationships



Our Sports & Adventure Program exists to facilitate growth through challenges with Indy youth. Students spend quality time with Teacher-Mentors and experience micro successes and failures in a safe environment, learn to lean on teams, and discover how to have a posture toward life that is essential for future success. This platform for programming builds life-changing relationships.

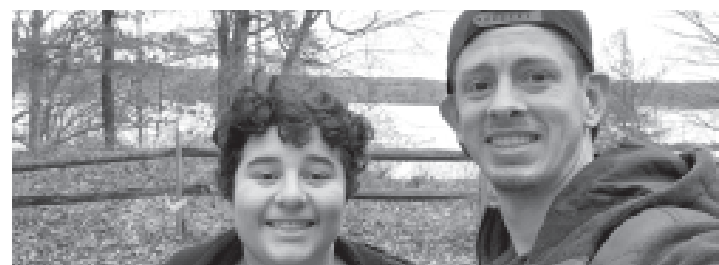


As we expand Sports & Adventure programming, building new community partnerships and volunteer opportunities is our priority. There are numerous ways you can help us make an impact through Sports & Adventure programming, providing a unique framework for addressing trauma and helping Indianapolis youth build skills that translate to other areas of their lives. Join in our Hope & Hoops spring basketball tournament, or volunteer at our 2022 Juneteenth Fellowship on the Fairways Golf Scramble at Douglass Park! If you are interested in sponsoring or engaging with Sports & Adventure programming, email us at info@elevateindy.org.

SPORTS & ADVENTURE MENTORING	since January 1, 2021		
	100+ students	2300+ hours	23.13 avg hours per participant

"Under this umbrella of Sports & Adventure, we have the opportunity to open many more doors for our students than ever before to challenge and engage them and to dive into deeper conversations that help them grow in character and social-emotional awareness. The sky is their limit!"

-Josh Mendoza, Teacher-Mentor



Thanks to our partners who made 2021 programming a success!



2021 *impact*